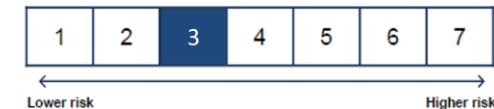


Strategy

Diversified multi-asset strategy (stocks, bonds, cash, real estate, currencies and commodities) combining “top down” macro allocation and “bottom-up” risk management within a defined risk budget, as well as integrating Artificial Intelligence into stock selection since 2019.

Risk indicator

Capital is at risk. The positions may lead to capital losses.



Risk and return targets

The long-term objective is to beat inflation by 5% per annum over a market cycle with a volatility target below 8%. The maximum risk budget is 8% monthly modified value at risk (MVaR). The short-term objective is to target positive returns over rolling 12-month periods.

Fund manager - Plurimi Wealth - Patrick Armstrong, CFA and Eugen Fostiak

More than 20 years of collaboration between managers. Winner of several awards including : MEA Best Asset Manager and Best use of AI 2024; Citywire Best Small Firm 2024; Global 100 Awards 2019; HFM European Performance Awards 2016, Institutional Alternative Awards 2016.

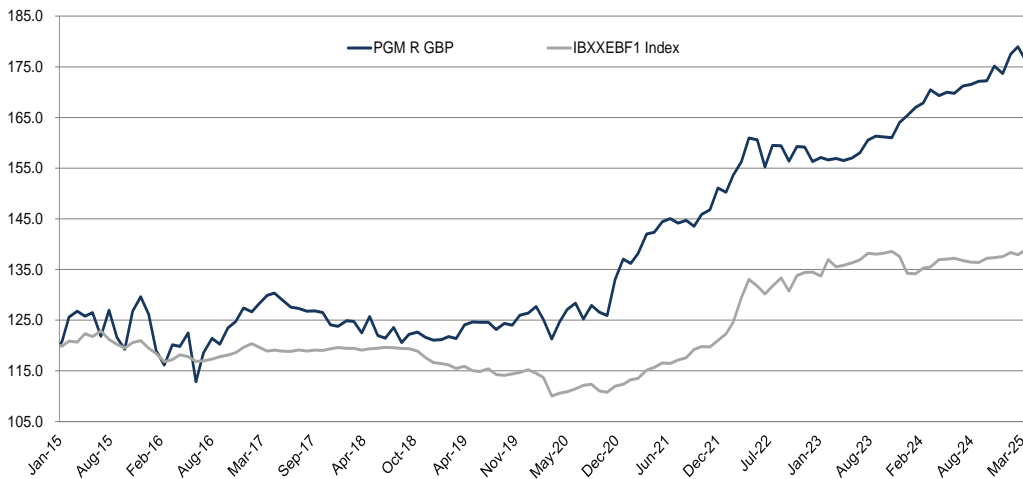
Monthly comment

The fund fell 1.6% in March.

The fund's net long position in equities was the primary detractor. Global equities fell 5% in March 2025 mainly due to Trump's tariffs (25% on imports from Mexico and Canada, and a hike on Chinese goods). This triggered fears of a trade war, recession, and stagflation. Tech stocks were hit especially hard, and investor confidence sank as recession risks jumped. We kept the equity allocation unchanged as we view Trump's tariffs as a strategy to create leverage to engineer better trade balances with a wide range of countries. This approach will create volatility, but we expect a roll back on many tariffs during April, following some concessions. Defense holdings, **Dassault Aviation** and **Kongsberg Gruppen**, benefit from structural tailwinds in the first part of March, driven by geopolitical tensions and rising global defense budgets - rather than cyclical growth. In healthcare and consumer staples, we remain invested in **Eli Lilly**, **Roche** and **Danone**. These names offer resilience. We maintain gold exposure through **Franco-Nevada** and **Kinross**.

We prefer TIPS over Treasuries. Real yields on 30-year TIPS are around 2%, providing a rare opportunity. If populist and protectionist policies persist, the primary risks are inflation and stagflation - not recession. Inflation breakevens remain subdued, but we believe they have room to move higher.

Tariffs also impact currency. The dollar dropped because the tariffs shook confidence in U.S. economic stability and future interest rate policy. Our base view is the US economy continues to grow in 2025, which will mean the Fed will not cut as much as the market expects.



Datas (%)	Jan.	Feb.	Mar.	Apr.	May	June	July	Aug.	Sept.	Oct.	Nov.	Dec.	YTD
2025 Fund (R GBP)	2.2	0.8	-1.6	-	-	-	-	-	-	-	-	-	1.4
IBXXEBF1 ¹ EUR	0.6	-0.3	0.8	-	-	-	-	-	-	-	-	-	1.0
2024 Fund (R GBP)	1.0	0.5	1.5	-0.7	0.4	-0.1	0.8	0.2	0.4	0.1	1.7	-0.8	5.0
IBXXEBF1 ¹ EUR	-0.1	0.8	0.2	1.1	0.1	0.1	-0.3	-0.2	-0.1	0.6	0.1	0.2	2.4
2023 Fund (R GBP)	0.5	-0.3	0.2	-0.3	0.3	0.7	1.6	0.5	-0.1	-0.1	1.9	0.8	5.8
IBXXEBF1 ¹ EUR	-0.6	2.4	-1.0	0.2	0.4	0.4	0.9	-0.1	0.1	0.3	-0.7	-0.7	1.6
2022 Fund (R GBP)	-0.6	2.3	1.7	3.0	-0.2	-3.3	2.8	0.0	-1.9	1.9	-0.1	-1.8	3.5
IBXXEBF1 ¹ EUR	1.1	1.9	3.8	2.8	-1.0	-1.2	1.2	1.2	-1.9	2.3	0.5	0.0	11.1
2021 Fund (R GBP)	-0.6	1.4	2.8	0.2	1.5	0.4	-0.6	0.4	-0.8	1.6	0.6	2.9	10.2
IBXXEBF1 ¹ EUR	0.8	0.2	1.4	0.5	0.7	-0.1	0.6	0.4	1.4	0.5	-0.1	1.1	7.7
2020 Fund (R GBP)	1.0	-2.0	-3.0	2.8	2.0	1.0	-2.5	2.2	-1.0	-0.5	5.6	3.0	8.4
IBXXEBF1 ¹ EUR	-0.6	-0.7	-3.2	0.5	0.3	0.5	0.6	0.2	-1.2	-0.2	1.1	0.3	-2.5
2019 Fund (R GBP)	0.1	0.5	-0.3	2.2	0.5	0.0	0.0	-1.1	1.0	-0.3	1.6	0.3	4.4
IBXXEBF1 ¹ EUR	-0.2	-0.2	-0.6	0.4	-0.7	0.1	0.5	-1.0	-0.2	0.3	0.2	0.5	-1.2

¹ Since inception, January 21st 2015

Figures based on month end NAVs

⁽²⁾ IBXXEBF1 = MARKIT iBoxx EUR France & Germany Breakeven EUR Inflation Index

	3 Months Return	Return since inception ⁽²⁾	Annualized Return ⁽³⁾	Ann. Vol. ⁽³⁾	Max DD ⁽³⁾	Monthly MVaR	Correl.	Beta
Fund (R GBP)	1.4%	46.8%	7.7%	5.3%	-3.6%	2.9	0.37	0.60
IBXXEBF1 Index	1.0%	15.8%	4.8%	3.4%	-3.2%			

⁽²⁾ 1st NAV : 21.01.2015 – NAV at inception : GBP 120

Monthly data – Figures based on month end NAVs

Past performance does not guarantee or predict future performance

⁽³⁾ 5-year statistics

PROSPER Professional Services SA
Rue Muzy 8
CH-1207 Geneva - Switzerland
+41 22 752 69 69
team@prosperrfunds.ch
www.prosperrfunds.ch

Fund information
Luxembourg : SICAV UCITS V
Registration : LU. UK
Fund manager : Plurimi Wealth LLP
Custodian bank Degroof Petercam
Luxembourg SA
Management company : Degroof Petercam Asset Services SA

Quotation : Daily
Fund assets : EUR 91 M
Subscription/Redemption
Business days
(cut-off T-1 17h00 CET)
Management Fee
1.2% for I Shares
2.0% for P Shares
Performance Fee
15% p.a. (HHWM)
15% p.a. (HHWM)

Share NAV	I EUR	I CHF	R GBP	I USD	P EUR	P CHF	P USD
ISIN	LU0927891365	LU0927891522	LU0927891795	LU0927891449	LU0927891878	LU0927892090	LU0927891951
Telekurs	21352372	21352385	21353600	21352379	21353998	21354009	21354004

Allocation by assets (%)

	Long	Short	Gross	Net
Equities	31.5	-3.9	35.3	27.6
Fixed income	61.5	-10.5	71.9	51.0
Real estate	0.0	0.0	0.0	0.0
Commodities	0.0	0.0	0.0	0.0
Currency	4.8	-4.8	9.6	0.0
Cash	2.2	0.0	2.2	2.2
Alternative	9.1	0.0	9.1	9.1
Total	109.0	-19.2	128.2	89.9

Contribution by asset class (%)

	Long	Short	Net
Equities	-1.6	0.2	-1.4
Fixed income	-0.5	0.1	-0.5
Real estate	0.0	0.0	0.0
Commodities	0.0	0.0	0.0
Currency	0.1	0.2	0.3
Alternative	0.0	0.0	0.0
Total	-2.1	0.5	-1.6

Geographical allocation (%)

	Long	Short	Gross	Net
Europe	70.1	0.0	70.1	70.1
North America	26.0	-7.9	33.9	18.2
Emerging Markets	0.0	0.0	0.0	0.0
Other	12.8	-11.3	24.1	1.6
Total	109.0	-19.2	128.2	89.9

Contribution by geographical allocation (%)

	Long	Short	Net
Europe	-0.6	0.1	-0.5
North America	-1.5	0.4	-1.1
Emerging Markets	0.0	0.0	0.0
Other	0.0	0.0	0.0
Total	-2.1	0.5	-1.6

Allocation by currency (%)

	Long	Short	Gross	Net
USD	21.0	-5.6	26.6	15.4
EUR	71.8	0.0	71.8	71.8
GBP	1.2	0.0	1.2	1.2
Other	11.6	0.0	11.6	11.6
Total	105.6	-5.6	111.2	100.0

Exposures and contributions by book (%)

	Weight ¹	1 mth	3 mth
Contrib. book Long	109.0	-2.1	0.6
Contrib. book Short	-19.2	0.5	0.8
Total	89.9	-1.6	1.4

Top 5 positions / Long (%)

Stock	Weight ¹
TIPS 1 ½ 02/15/53	3.7
FRANCO-NEVADA CORP	2.4
COMMERZBANK 5 1/8 01/18/30	2.4
NETFLIX 3 5/8 06/15/30	2.3
ELI LILLY & CO	2.3
Total	13.0

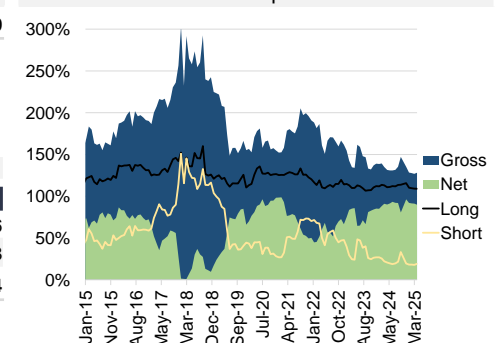
Top contributors 1 month. 3 months (%)

	Weight ¹	1 mth	3 mth
DASSAULT AVIATION SA	1.9	0.4	0.7
USD/EUR 3/21/2025 (USD)	0.0	0.2	0.2
FRANCO-NEVADA CORP	2.4	0.1	0.5
GOOGLE US 03/21/25 C170	0.0	0.1	0.1
MITSUBISHI UFJ FINANCIAL	0.0	0.1	0.1
ROLLS-ROYCE HOLDINGS	1.1	0.0	0.2
JPN 10Y BOND MAR 25	0.0	0.1	0.2
ROCHE HOLDING	1.6	0.0	0.2

Portfolio structure

	Long	Short
Number of holdings	92	7
Top 10 (%)	24.1	-18.2

Portfolio exposures



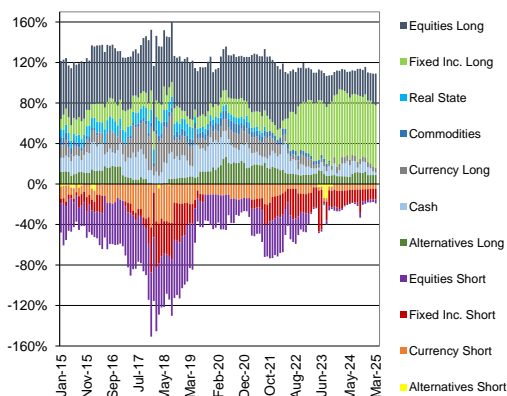
Top 5 positions / Short (%)

Stock	Weight ¹
JPN 10Y BOND JUN 25	-10.5
USD/EUR 2025-06-20 FORWARD	-4.8
META 04/17/25 C610 US	-1.3
S&P500 EMINI FUT JUN 25	-0.9
PLURIMI AI SHORT EQUITY	-0.8
Total	-18.2

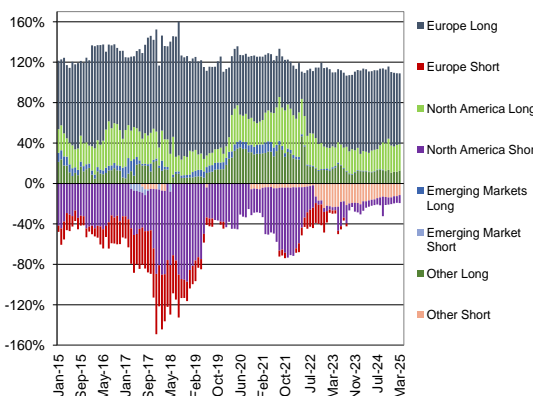
Top detractors 1 month. 3 months (%)

	Weight ¹	1 mth	3 mth
ELI LILLY & CO	2.3	-0.4	-0.1
ALPHABET INC	1.8	-0.3	-0.5
TIPS 1 ½ 02/15/53	3.7	-0.2	0.0
CITYGROUP INC	0.0	-0.2	0.0
IAG GROUP	0.5	-0.2	-0.1
ABERCROMBIE & FITCH	0.0	-0.1	-0.4
ADOBE INC	0.9	-0.2	-0.2
HITASHI LTD	1.0	-0.1	-0.1
DR HORTON INC	0.9	0.0	-0.1

Portfolio exposure by asset class



Portfolio exposure by geographical allocation



(1) End of month